

ST. CLAIR COUNTY HEALTH DEPARTMENT

STORMWATER

**WET WEATHER TMDL
SAMPLING PLAN**

Port Huron Area School District

2025



STORMWATER



KEEP IT CLEAN

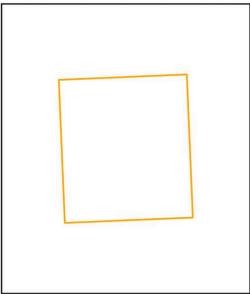
Port Huron Area School District

Outfall/POD ID	Latitude	Longitude	Receiving Water
PHASD-06	42.947197	-82.456571	City of Port Huron
PHASD-07	42.946039	-82.457712	City of Port Huron
PHASD-08	43.002678	-82.450811	City of Port Huron
PHASD-09	43.000911	-82.45189	City of Port Huron
PHASD-10	43.000433	-82.450082	City of Port Huron
PHASD-27	42.97543	-82.452089	City of Port Huron
PHASD-28	42.975212	-82.452709	City of Port Huron
PHASD-29	42.97543	-82.452089	City of Port Huron
PHASD-30	42.972515	-82.447909	City of Port Huron
PHASD-31	42.972841	-82.447932	City of Port Huron
PHASD-32	43.019793	-82.443705	City of Port Huron
PHASD-33	43.020455	-82.442298	City of Port Huron
PHASD-34	42.972093	-82.447729	City of Port Huron
PHASD-35	42.971146	-82.44694	City of Port Huron
PHASD-36	42.968809	-82.43072	City of Port Huron
PHASD-37	42.969331	-82.429743	City of Port Huron
BCM-50	42.948567	-82.482832	SCCDO
BCM-51	42.949182	-82.483713	SCCDO
BCM-52A	42.949826	-82.484056	SCCDO
BCM-49	42.95	-82.484324	SCCDO



TOTAL MAXIMUM DAILY LOAD SCREENING

ST. CLAIR COUNTY, MICHIGAN

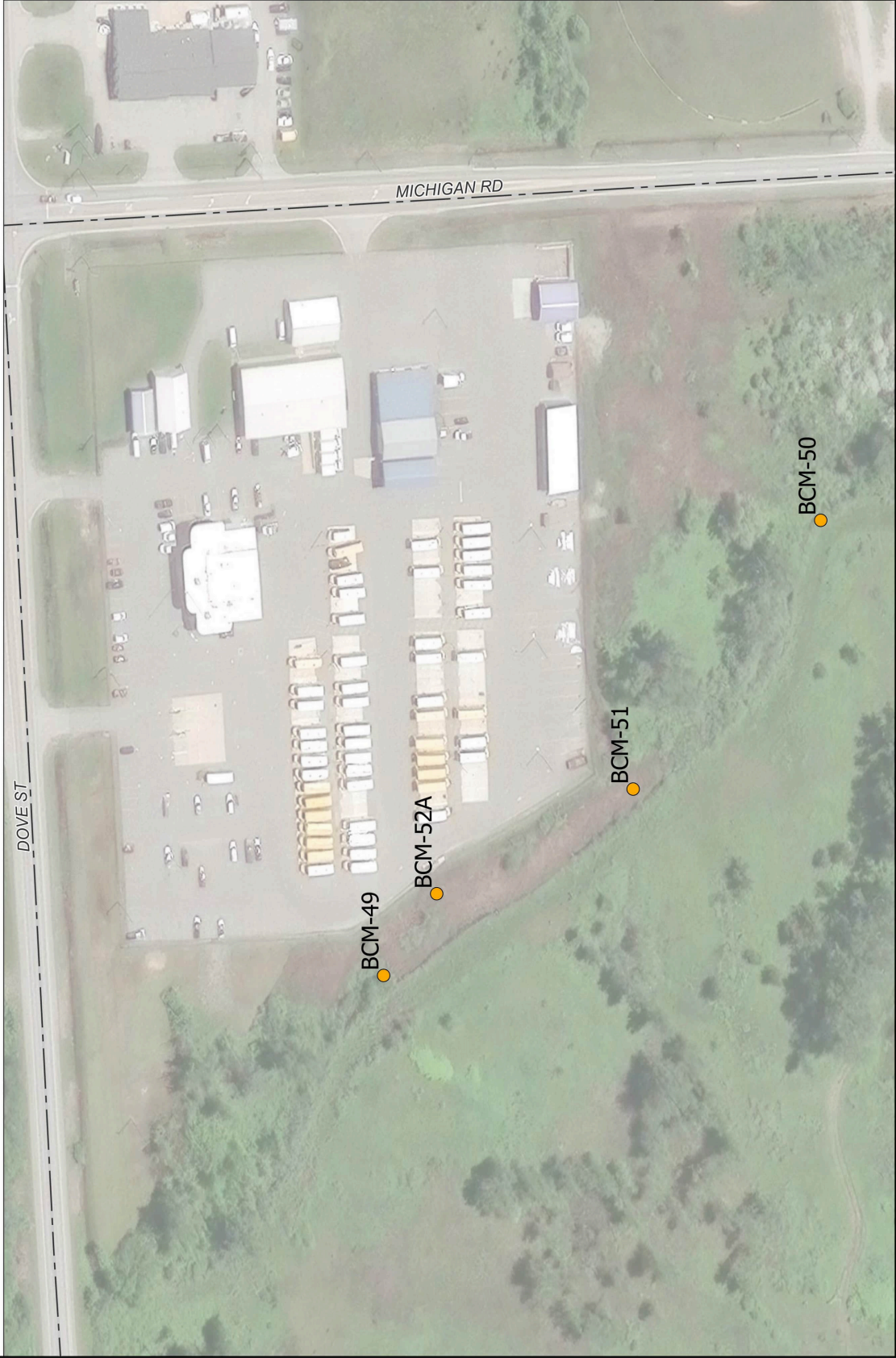


AREA MAP
NOT TO SCALE



LEGEND

- STATE ROADS
- COUNTY ROADS
- LOCAL ROADS
- SCC TMDL NESTED GROUP 1



BY	MARK	REVISIONS	DATE
THE WORK REPRESENTED BY THIS DRAWING WAS DESIGNED BY THE ENGINEER FOR THE PROJECT AND THE ENGINEER HAS REVIEWED THE WORK FOR ACCURACY AND COMPLIANCE WITH THE CONDITIONS AND QUALITY AS SHOWN. THE ENGINEER HAS CONDUCTED A VISUAL INSPECTION OF THE PROJECT AND HAS FOUND IT TO BE IN ACCORDANCE WITH THE CONDITIONS AND QUALITY AS SHOWN. THE ENGINEER HAS CONDUCTED A VISUAL INSPECTION OF THE PROJECT AND HAS FOUND IT TO BE IN ACCORDANCE WITH THE CONDITIONS AND QUALITY AS SHOWN.			
SAINT CLAIR COUNTY, MICHIGAN			
TOTAL MAXIMUM DAILY LOAD SCREENING			
PROJECT NO. 12096SG2013			
DESIGN BY: SMC	CU BY: KRS	PROJECT NO.	12096SG2013
DRAWN BY: SMC	APP BY: KRS	DATE:	FEBRUARY 2025
STDS:	SHEET	OF	15
DATE:	FILE NO.	DRAWING	
SCALE:	1"=50'		

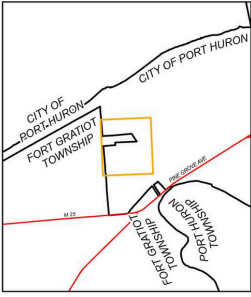


SAINT CLAIR COUNTY
230 S. WALTON AVE
ST. CLAIR, MI 48077
www.spicer-group.com



TOTAL MAXIMUM DAILY LOAD SCREENING

ST. CLAIR COUNTY, MICHIGAN



AREA MAP
NOT TO SCALE



LEGEND

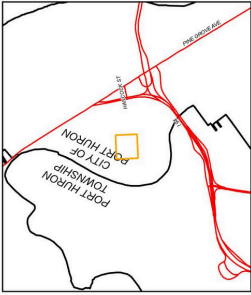
- STATE ROADS
- COUNTY ROADS
- LOCAL ROADS
- SCC TMDL NESTED GROUP 1

BY	MARK	REVISIONS	DATE
THE WORK REPRESENTED BY THIS DRAWING WAS DESIGNED BY THE ENGINEER FOR THE CITY OF PORT HURON, MICHIGAN. THE ENGINEER HAS CONDUCTED A VISUAL INSPECTION OF THE PROJECT AND HAS FOUND IT TO BE IN ACCORDANCE WITH THE CONDITIONS AND QUALITY AS SHOWN. THE ENGINEER HAS CONDUCTED A VISUAL INSPECTION OF THE PROJECT AND HAS FOUND IT TO BE IN ACCORDANCE WITH THE CONDITIONS AND QUALITY AS SHOWN. THE ENGINEER HAS CONDUCTED A VISUAL INSPECTION OF THE PROJECT AND HAS FOUND IT TO BE IN ACCORDANCE WITH THE CONDITIONS AND QUALITY AS SHOWN.			
SAINT CLAIR COUNTY, MICHIGAN			
TOTAL MAXIMUM DAILY LOAD SCREENING			
PROJECT NO. 120960SG2013			
DATE: FEBRUARY 2025			
SCALE: 1"=140'			
SHEET OF 15			
DRAWING			
DR			

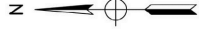


TOTAL MAXIMUM DAILY LOAD SCREENING

ST. CLAIR COUNTY, MICHIGAN



AREA MAP
NOT TO SCALE



LEGEND

- STATE ROADS
- COUNTY ROADS
- LOCAL ROADS
- SCC TMDL NESTED GROUP 1

BY	MARK	REVISIONS	DATE
DE BY: SWS			
DR BY: SWS			
DATE: FEBRUARY 2025			
SCALE: 1"=50'			
STDS:			
FILE NO.			
SHEET			
OF			
DR			
DRAWING			

SAINT CLAIR COUNTY, MICHIGAN

TOTAL MAXIMUM
DAILY LOAD SCREENING



SAINT CLAIR COUNTY
230 S. WALL STREET
PORT HURON, MI 48130
www.spicer-group.com

DE BY: SWS
DR BY: SWS
DATE: FEBRUARY 2025
SCALE: 1"=50'

STDS:

FILE NO.

SHEET

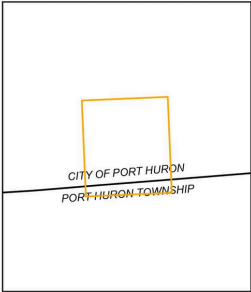
OF

DR

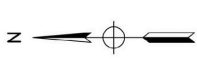


TOTAL MAXIMUM DAILY LOAD SCREENING

ST. CLAIR COUNTY, MICHIGAN

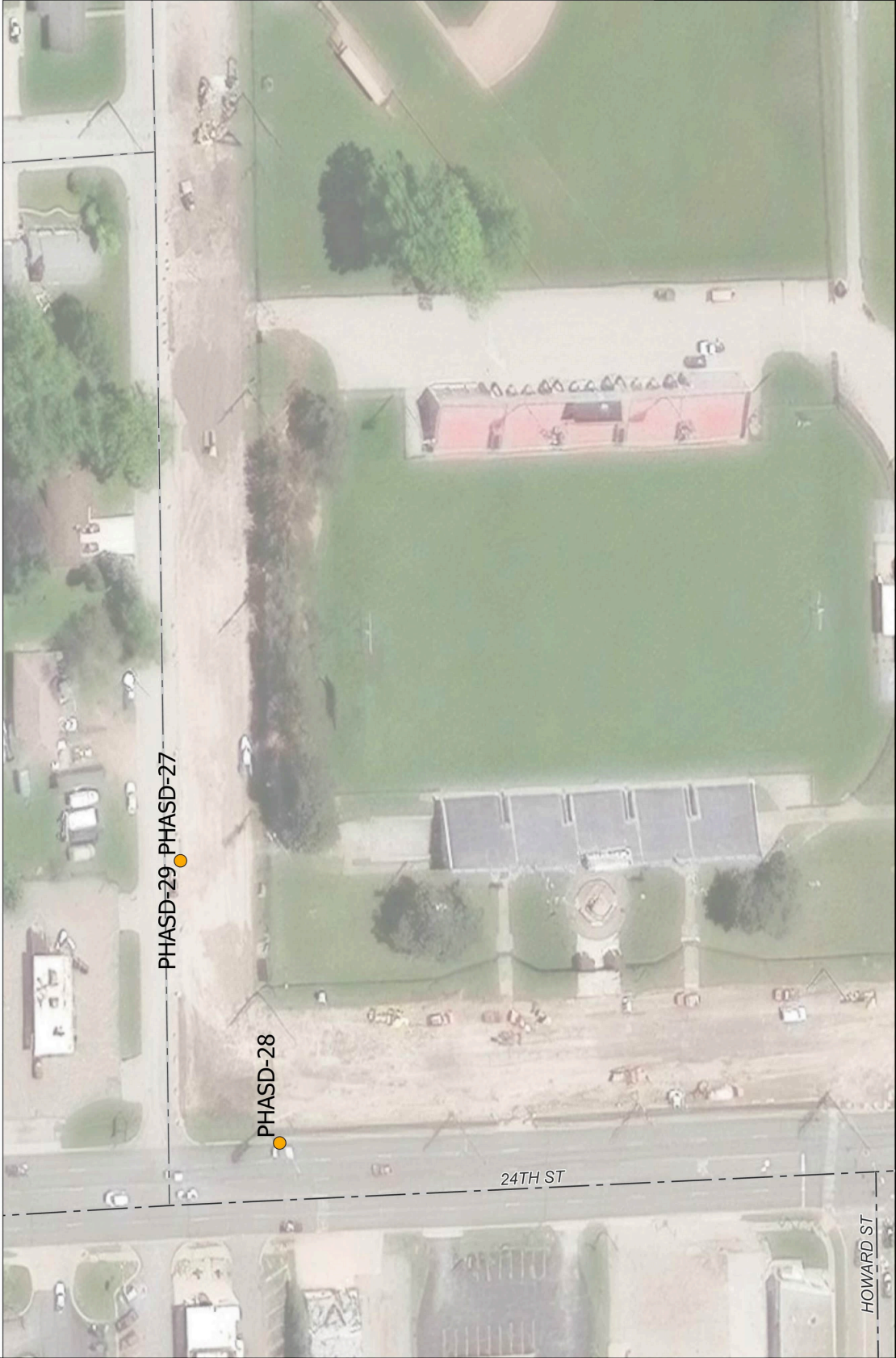


AREA MAP
NOT TO SCALE



LEGEND

- STATE ROADS
- COUNTY ROADS
- LOCAL ROADS
- SCC TMDL NESTED GROUP 1



BY	MARK	REVISIONS	DATE
DE BY: SWS			
DR BY: SWS			
APR BY: MRS			
PROJECT NO.	12096SG2013		
STDS.			
DATE:	FEBRUARY 2025		
SCALE:	1"=40'		
SHEET	OF	15	DR
DRAWING			

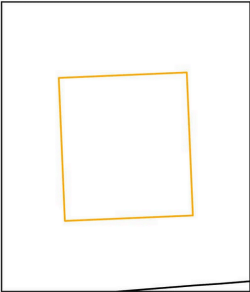


ST. CLAIR COUNTY
230 S. WALTON AVE
PORT HURON, MI 48130
www.spicer-group.com



TOTAL MAXIMUM DAILY LOAD SCREENING

ST. CLAIR COUNTY, MICHIGAN

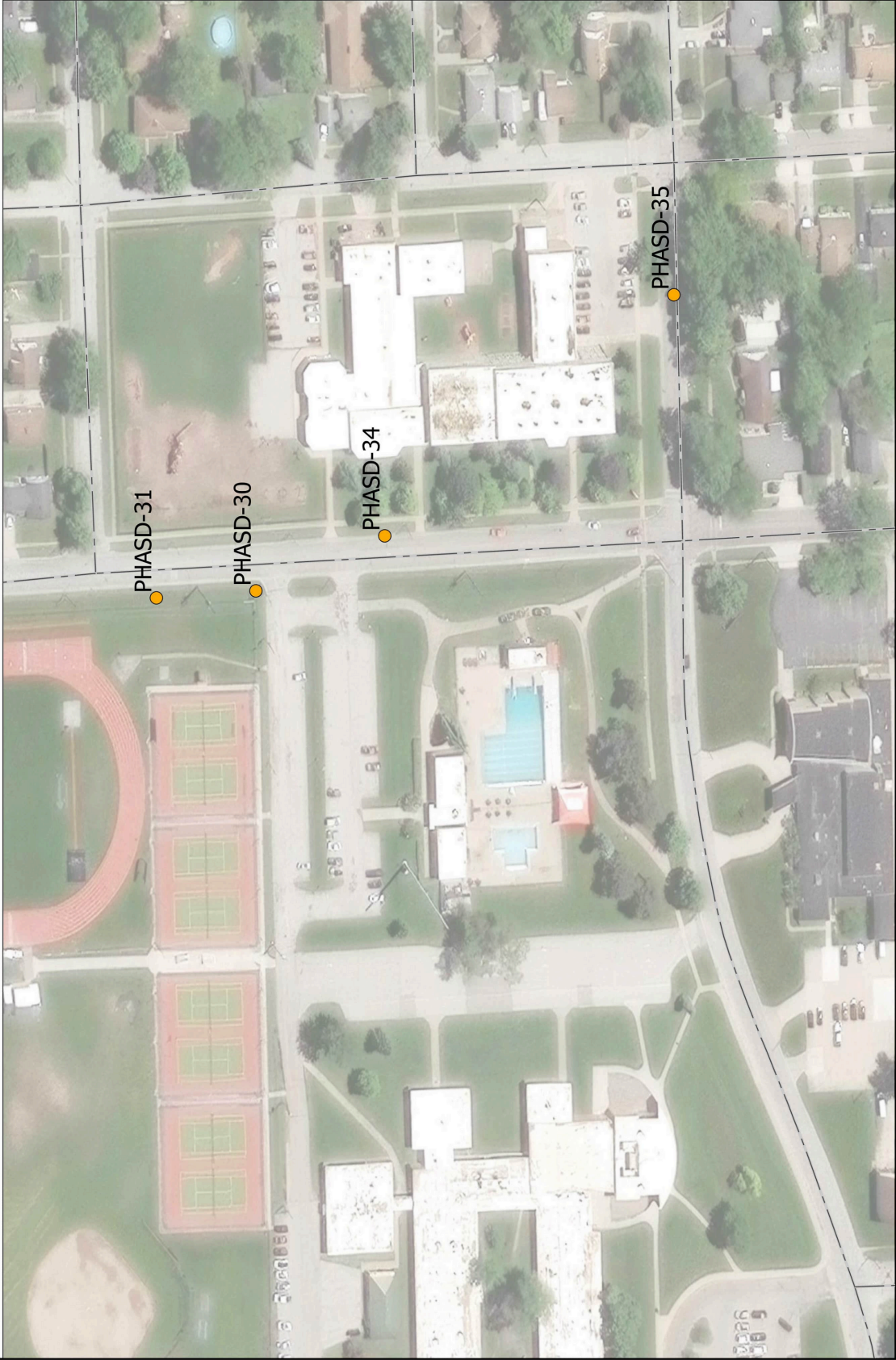



AREA MAP
NOT TO SCALE



LEGEND

- STATE ROADS
- COUNTY ROADS
- LOCAL ROADS
- SCC TMDL NESTED GROUP 1



BY	MARK	REVISIONS	DATE
DE BY: SMG			
DR BY: SMG			
THE WORK REPRESENTED BY THIS DRAWING WAS DESIGNED BY THE ENGINEER FOR THE CITY OF SAINT CLAIR COUNTY, MICHIGAN. THE ENGINEER HAS REVIEWED THE DRAWING WITH THE CONSULTING ENGINEER AND HAS FOUND IT TO BE IN ACCORDANCE WITH THE CONDITIONS AND QUALITY OF THE DESIGN AND CONSTRUCTION. THE ENGINEER'S REVIEW IS LIMITED TO THE DESIGN AND CONSTRUCTION OF THE PROJECT AND DOES NOT INCLUDE ANY OTHER INFORMATION.			
SAINT CLAIR COUNTY, MICHIGAN			
TOTAL MAXIMUM DAILY LOAD SCREENING			
 <div>SAINT CLAIR COUNTY 230 S. WALTON AVE ST. CLAIR, MI 48077 www.spicer-group.com</div>			
DE BY: SMG	CU BY: KRS	PROJECT NO:	12096SG2013
DR BY: SMG	APP BY: KRS	SHEET	OF 15
DATE: FEBRUARY 2025	FILE NO:	DRAWING	DR
SCALE: 1"=50'			



LEGEND

- STATE ROADS
 — COUNTY ROADS
 — LOCAL ROADS
 ● SCC TMDL NESTED GROUP 1

[illegible]

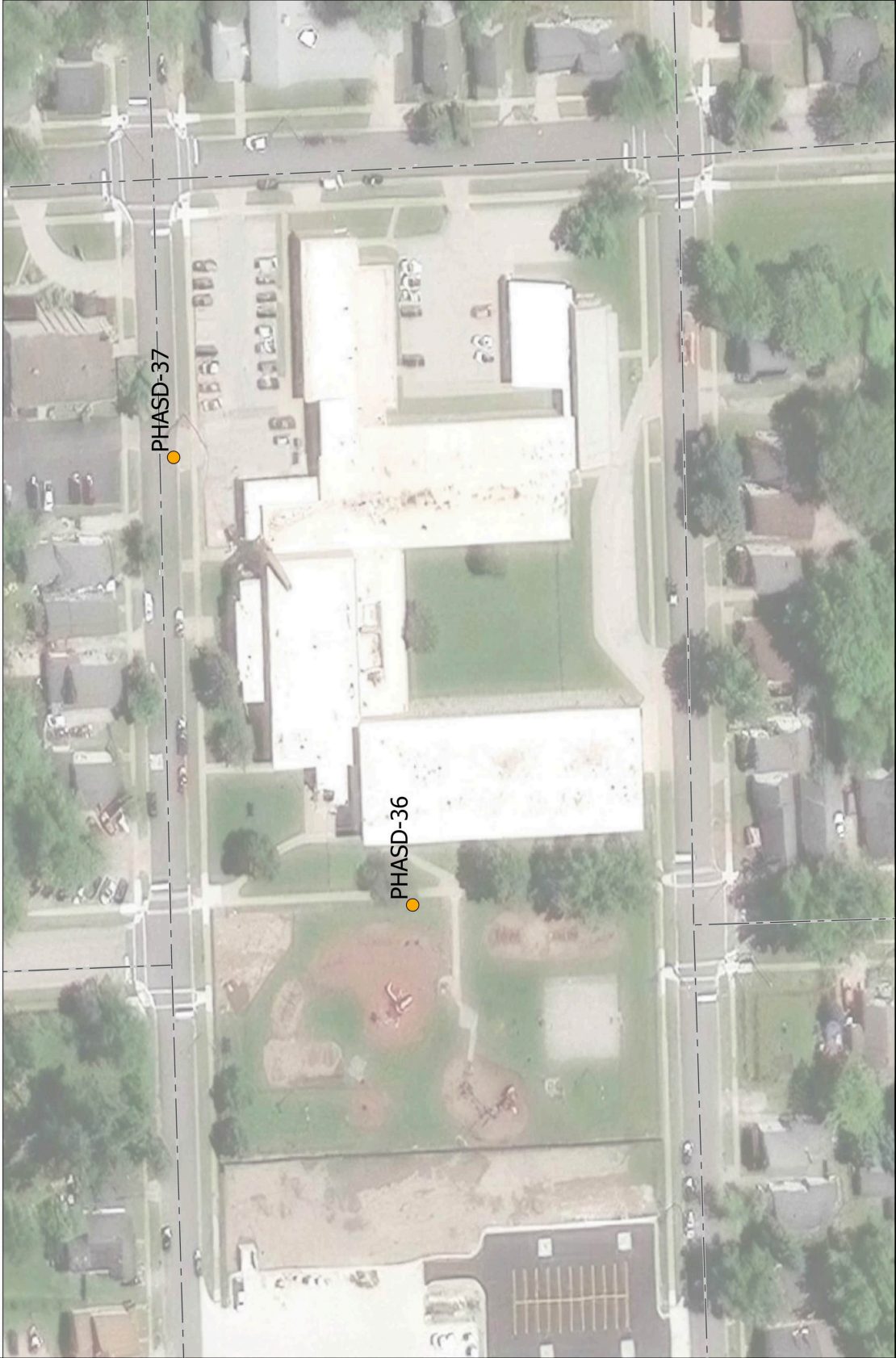
THE WORK REPRESENTED BY THIS DRAWING WAS DESIGNED BY THE ENGINEER FOR THIS SPECIFIC APPLICATION AND SPECIFIC LOCATION DESCRIBED HEREON IN ACCORDANCE WITH THE CONDITIONS PREVALENT AT THE TIME THE DESIGN WAS DONE. THE ENGINEER DOES NOT GUARANTEE AND WILL NOT BE LIABLE FOR ANY OTHER LOCATION, CONDITION, DESIGN OR PURPOSE.

SAINT CLAIR COUNTY, MICHIGAN

TOTAL MAXIMUM
DAILY LOAD SCREENING



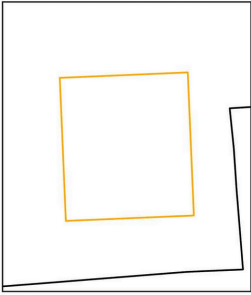
DE. BY: SMG DR. BY: SMG	CH. BY: KRS APP. BY: KRS	PROJECT NO. 120960SG2013	
STDS.		SHEET OF 15	DR DRAWING
DATE: FEBRUARY 2025 SCALE: 1"=40'		FILE NO.	





TOTAL MAXIMUM DAILY LOAD SCREENING

ST. CLAIR COUNTY, MICHIGAN




AREA MAP
NOT TO SCALE



LEGEND

- STATE ROADS
- COUNTY ROADS
- LOCAL ROADS
- SCC TMDL NESTED GROUP 1



BY	MARK	REVISIONS	DATE
THE WORK REPRESENTED BY THIS DRAWING WAS DESIGNED BY THE ENGINEER FOR THE PROJECT AND THE ENGINEER HAS REVIEWED THE DESIGN AND FOUND IT TO BE IN ACCORDANCE WITH THE CONDITIONS AND QUALITY OF THE DESIGN AND CONSTRUCTION. THE ENGINEER DOES NOT GUARANTEE THE ACCURACY OF THE INFORMATION AND WILL NOT BE LIABLE FOR ANY OTHER LOCATION, CONDITION, OR DESIGN INFORMATION.			
SAINT CLAIR COUNTY, MICHIGAN			
TOTAL MAXIMUM DAILY LOAD SCREENING			
 <div>SAINT CLAIR COUNTY 230 S. WALTON AVE ST. CLAIR, MI 48077 www.spicer-group.com</div>			
DESIGN BY: SMS	CU BY: KRS	PROJECT NO:	120960SG2013
DR BY: SMS	APP BY: KRS	DATE:	FEBRUARY 2025
STATUS:	SHEET OF 15	FILE NO.	DR
SCALE:	1"=50'	DRAWING	